

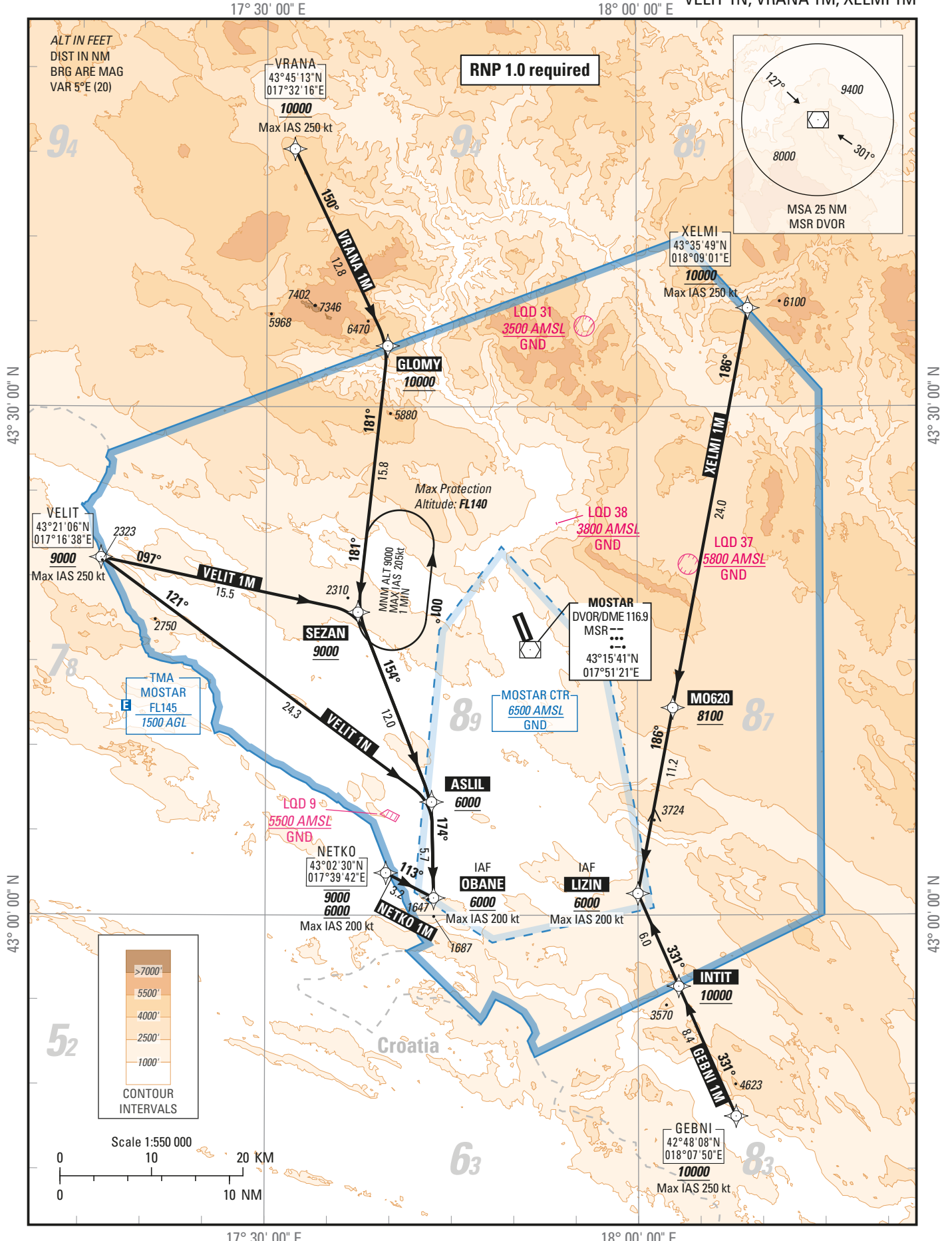
STANDARD ARRIVAL CHART —  
INSTRUMENT (STAR) — ICAO

TRANSITIONAL ALTITUDE  
10 000 ft

TWR 125.550  
APP 120.225  
129.875  
ATIS 126.225

**MOSTAR / MOSTAR (LQMO)**  
**RNP STAR RWY 33**

GEBNI 1M, NETKO 1M, VELIT 1M  
VELIT 1N, VRANA 1M, XELMI 1M



LQMO RNP STAR RWY 33														
Proposed tabular description for navigation database coding														
Seq N°	PT	W/P ID	OverFly	CRS Val (°)	CRS Type	DIST val NM	ALT DESC	ALT ONE FT	ALT TWO FT	SPD LMT KT	NAV PERF NM	Transition Identifier	Runway Direction	Magnetic CRS val (°)
<b>VELIT 1M</b>														
10	IF	VELIT					+	9000		-250	1.000 NM	33	33	
20	TF	SEZAN		101.862	TT	15.520	+	9000			1.000 NM	33	33	096.862
30	TF	ASLIL		158.703	TT	12.010					1.000 NM	33	33	153.703
40	TF	OBANE		178.771	TT	5.662	+	6000		-200	1.000 NM	33	33	173.771
<b>VELIT 1N</b>														
10	IF	VELIT					+	9000		-250	1.000 NM	33	33	
20	TF	ASLIL		126.236	TT	24.296	+	6000			1.000 NM	33	33	121.236
30	TF	OBANE		178.771	TT	5.662	+	6000		-200	1.000 NM	33	33	173.771
<b>NETKO 1M</b>														
10	IF	NETKO					B	9000	6000	-200	1.000 NM	33	33	
20	TF	OBANE		117.601	TT	3.189	+	6000		-200	1.000 NM	33	33	112.601
<b>GEBNI 1M</b>														
10	IF	GEBNI					+	10000		-250	1.000 NM	33	33	
20	TF	INTIT		336.365	TT	8.368	+	10000			1.000 NM	33	33	331.365
30	TF	LIZIN		336.388	TT	5.980	+	6000		-200	1.000 NM	33	33	331.388
<b>XELMI 1M</b>														
10	IF	XELMI					+	10000		-250	1.000 NM	33	33	
20	TF	MO620		190.844	TT	24.000	+	8100			1.000 NM	33	33	185.844
30	TF	LIZIN		190.773	TT	11.152	+	6000		-200	1.000 NM	33	33	185.773
<b>VRANA 1M</b>														
10	IF	VRANA					+	10000		-250	1.000 NM	33	33	
20	TF	GLOMY		154.695	TT	12.843	+	10000			1.000 NM	33	33	149.695
30	TF	SEZAN		186.322	TT	15.815	+	9000			1.000 NM	33	33	181.322
40	TF	ASLIL		158.703	TT	12.010					1.000 NM	33	33	153.703
50	TF	OBANE		178.771	TT	5.662	+	6000		-200	1.000 NM	33	33	173.771

Waypoint coordinates			
W/P ID	W/P Type	WGS-84 Latitude	WGS-84 Longitude
ASLIL	ICAO	43°06'40.9900"N	017°43'23.2200"E
GEBNI	ICAO	42°48'08.0000"N	018°07'50.0000"E
GLOMY	ICAO	43°33'36.0000"N	017°39'49.0000"E
INTIT	ICAO	42°55'48.0000"N	018°03'16.0000"E
LIZIN	ICAO	43°01'16.7700"N	018°00'00.1000"E
MO620	ADHP	43°12'14.2970"N	018°02'50.6010"E
NETKO	ICAO	43°02'30.0000"N	017°39'42.0000"E
OBANE	ICAO	43°01'01.2600"N	017°43'33.1500"E
POPPE	ICAO	43°01'09.2600"N	017°51'43.7700"E
SEZAN	ICAO	43°17'52.6600"N	017°37'25.9200"E
VELIT	ICAO	43°21'06.0000"N	017°16'38.0000"E
VRANA	ICAO	43°45'13.0000"N	017°32'16.0000"E
XELMI	ICAO	43°35'49.0000"N	018°09'01.0000"E